

# GCC Agenda

DATE: JULY 13, 2023 @ 9AM

Zoom Link: <https://unl.zoom.us/j/95996572169>



JoAnn Gieselman  
Director - Growing Community Connections  
[jgieselman@siouxlandship.org](mailto:jgieselman@siouxlandship.org)

## SPEAKERS



Kemi  
Brown



Dominic  
Vandewalle



Sean  
Hoelsing



Jessica  
Duncan



Anais  
Mares



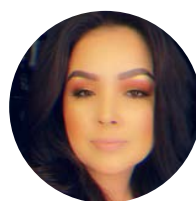
Heather  
Hennings



Abdikadir  
Mohamed



Rachel  
Lundgren



America  
Perez

## AGENDA:

- Welcome - Kemi Brown
- beSomebody- Dominic Vandewalle
- Alzheimer's Association - Sean Hoelsing and Jessica Duncan - **Continuous Communication** - QUALITY OF LIFE
- Physical Health - Container Gardening - Anais Mares - **Continuous Communication** - HEALTH
- Electronic Signs/TVs Tips - Heather Hennings - **Continuous Communication** - SAFETY
- Abdikadir Mohamed - Somali Nonprofit - **Mutually Reinforcing Activities** - ECONOMIC STABILITY
- Success Data - Rachel Lundgren - **Shared Measurement** - EDUCATION
- Evaluation - **Shared Measurement**
- Shoutouts - **Continuous Communication**
- Birds of a Feather - **Continuous Communication**
- Conclusion - America Perez

## NEXT MEETINGS:

9:00-10:00 (THE 2ND THURSDAY OF EVERY MONTH)

### Speaker for Upcoming Meetings:

- August 2023 - Siouxland Mental Health-Childhood Adolescent Services - Morgan Haskell
- September 2023 - In-Person meeting at Cottonwood Conference Center
- October 2023 - Data meeting with SFS and HSI
- November-2023- Mary J. Treglia
- December 2023 -Abilitytech-Dustin Rhoades
- January 2024 - Healthy Homes - Alicia Sanders
- February 2024 - Center for Siouxland - VITA - Olivia Benjamin
- March 2024 - Fire Foundation -Lisa Niebuhr
- April 2024 - Early Childhood Connections- Kathy Moller

*Growing Community Connections does not provide programs, it serves to provide a common table for community partners to gather around and collectively address community needs. We support all the organizations and individuals that are directed toward our common outcomes. For more information, please see our website at: [growingcommunityconnections.com](http://growingcommunityconnections.com) or visit our Facebook page .*



Backbone Agencies

# Growing Community Connections

---

## COMMON AGENDA

Common Agenda

GCC exists to connect people and organizations and empower everyone to support the children and families in our communities. Our goal is to maximize the potential that lies within everyone so that families and communities can thrive! (Birth-Rocker)

---

## PURPOSE

Mutually Reinforcing Activities

Partners working collectively to build on the wellbeing of all individuals and families in our communities.

---

## COMMUNITY GOALS

Shared Measurement Systems

As a result of our data from Source for Siouxland we have formed focus groups on Health, Safety, Education, Economic stability, and Quality of life to determine new goals, using data and community information. You are always welcome to be a part of any group!

---

## COLLECTIVE IMPACT

Mutually Reinforcing Activities

Common Agenda  
Continuous Communications  
Backbone Agency  
Mutually Reinforcing Activities  
Shared Measurement Systems

---

## AREAS OF IMPACT

Mutually Reinforcing Activities

Economic Stability  
Education  
Health  
Safety  
Quality of Life

---

## WE BELIEVE

Common Agenda

Growing Community Connections believes that strengthening our community requires all of us working together.

- Maintaining open communication with our partners and the community
  - Identifying community strengths and needs
  - Actively coordinating and sharing lessons learned
  - Defining common outcomes
  - Aligning individual community needs and resources to meet those outcomes
  - Seeking additional resources to help reach our goals
  - Using evaluation and community data to strengthen our programs
- 

## DIVERSITY, EQUITY, AND INCLUSION

Common Agenda

- GCC endeavors to build belonging in every meeting.
- GCC is a Tri-state collaborative that strives to connect and support our wonderfully diverse communities.
- We strive to facilitate a culture where diversity, equity, and inclusion are respected and intentionally valued by implementing thoughtful, practical, consistent, and innovative strategies that can serve as a model for those in our communities.
- GCC denounces discrimination and opposes any form of oppression.
- We strive to improve the quality of life for all individuals in the Siouxland area including diverse cultures, backgrounds, and perspectives.
- GCC is committed to supporting the work of community partners who strive to build positive protective factors for our youth and children and preventative supports that keep families together.
- We are a data-driven collaboration providing evidence that we are meeting the needs of our diverse community.

